

Quick Start Guide MicroMAXX



As of January 2022

© MAXX GmbH, 2022. All rights reserved. Printed in Germany

■ ■ ■ Innovation made in Germany

Type	Portable sampler for manual sampling
Housing:	Polycarbonat (PC)
Overall dimensions	(HxWxD) 285 x 240 x 165
Weight:	approx. 5 kg
Power supply:	12 V/ 7,2 Ah lead storage battery (maintenance-free, leak proof); 115V or 230V operation by means of battery charger in buffer mode. power consumption max. 30 VA in buffer mode
Power requirement:	approx. 70 VA
Maximum Lift /Suction height:	approx. 8,5 m (at 1013hPa)
Typical line velocity at head height:	1,06 m/s at suction height 2m 0,59 m/s at suction height 6m (at 1013hPa)
Suction hose	PVC, L=5 m, ID=10 mm with Stainless steel sinker weight, max. hose length 30 m
Ambient temperature:	0° to +50° C
Max. runtime	5 Minutes
Max. Duty cycle	50%
Sample temperature:	0° to +40° C
Standards:	CE

Subject to technical changes.

General Information

Safety information

Please read this entire manual before unpacking, setting up, or operating this equipment. Pay attention to all danger and caution statements. Failure to do so may result in personal injury or damage to the instrument.

To ensure that the protection provided by this equipment is not impaired, do not use or install this equipment in any manner other than that specified in this manual.

Use of hazard information



DANGER

Indicates a potentially or imminently hazardous situation which, if not avoided, will result in death or serious injury.



WARNING

Indicates a potentially or imminently hazardous situation that, if not avoided, could result in death or serious injury.









CAUTION

Indicates a potentially or imminently hazardous situation that could result in minor or moderate injury.

Important note: Information that requires special emphasis. **Note:** Information that supplements points in the main text.

Precautionary labels

Read all labels and tags attached to the instrument. Failure to do so may result in personal injury or damage to the instrument. A symbol, if noted on the instrument, will be included with a danger or caution statement in the manual.

	This symbol, if noted on the instrument, references the user manual for operation and/or safety information.
	This symbol, when noted on a product enclosure or barrier, indicates that a risk of electrical shock and/or electrocution exists.
	This symbol may appear on the product and indicates the need for protective eye wear.
	This symbol may appear on the product and identifies the connection point for the protective ground.
	When this symbol appears on the product, it identifies the location of a fuse or a current limiter.
	Electrical equipment marked with this symbol may not be disposed of in European domestic or public disposal systems after 12 August 2005. In conformity with European local and national regulations (EU Directive 2002/96/EC), European electrical equipment users must now return old or end-of-life equipment to the manufacturer for disposal at no charge to the user Note: For return for recycling, please contact the equipment manufacturer or supplier for instructions on how to return end-of-life equipment, manufacturer-supplied electrical accessories, and all auxiliary items for proper disposal.

General Information

Permissible application

- The device can be used for sampling liquid, aqueous substances (water/waste water) with a temperature of up to 50 °C. The user is responsible for any possible danger emanating from the sampled medium and the resulting damage.
- The sampler is designed for operation in **non-hazardous areas** (no explosion risk).
- The sampler can be operated at ambient temperatures from 0°C to +45°C.
- Sampling from **pressurized lines** is **not possible**.

Functional description

The equipment provides temporary storage for liquids of a specified volume so that they can be analysed.

Used Materials



In our devices different materials are used which come into contact with the sample.

These are depending on the device type PVC, PC, PS, glass, stainless steel, silicone or PE.

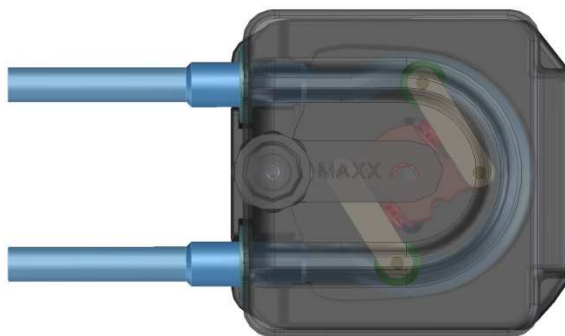
Depending on analysis requirements, we can also offer you alternative materials, e.g. different types of silicone or Teflon

Product contents

The equipment is supplied with a tube, built-in battery and this quick start guide and brief operating instructions.

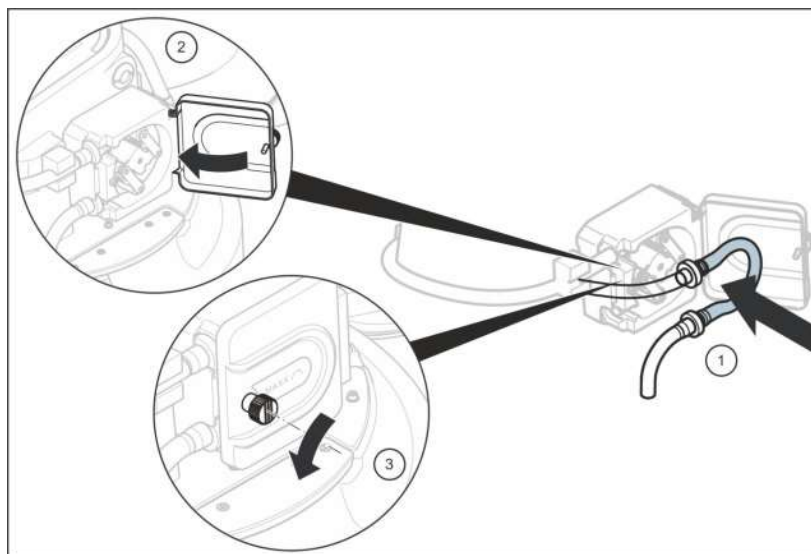
The necessary charger **2A IP65** (Part.No. 0010397) is **optional**.

Dosingsystem - PERISTALTIC PUMP-



Important Note:

Put the tube in the pump and connect the tubes



If the device is not used for a long period of time, the pump hose must be removed. This prevents sticking and/or damage to the hose!

Operating note:



the maximum running time of the pump must not exceed **5 minutes** with a maximum **duty cycle** of **50%!**

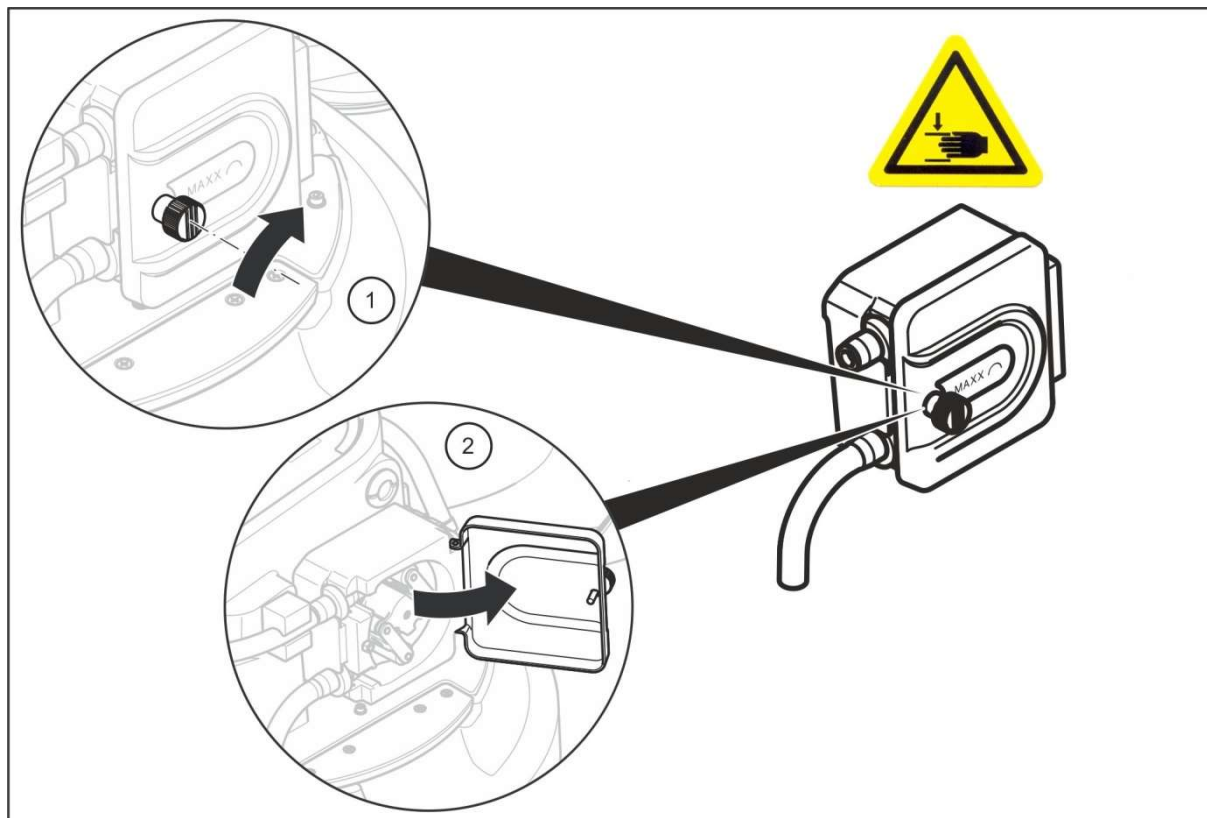
PUMP TUBE REPLACEMENT



Important Note: Use of tubing other than that supplied by the manufacturer may cause excessive wear on mechanical parts and/or poor pump performance!

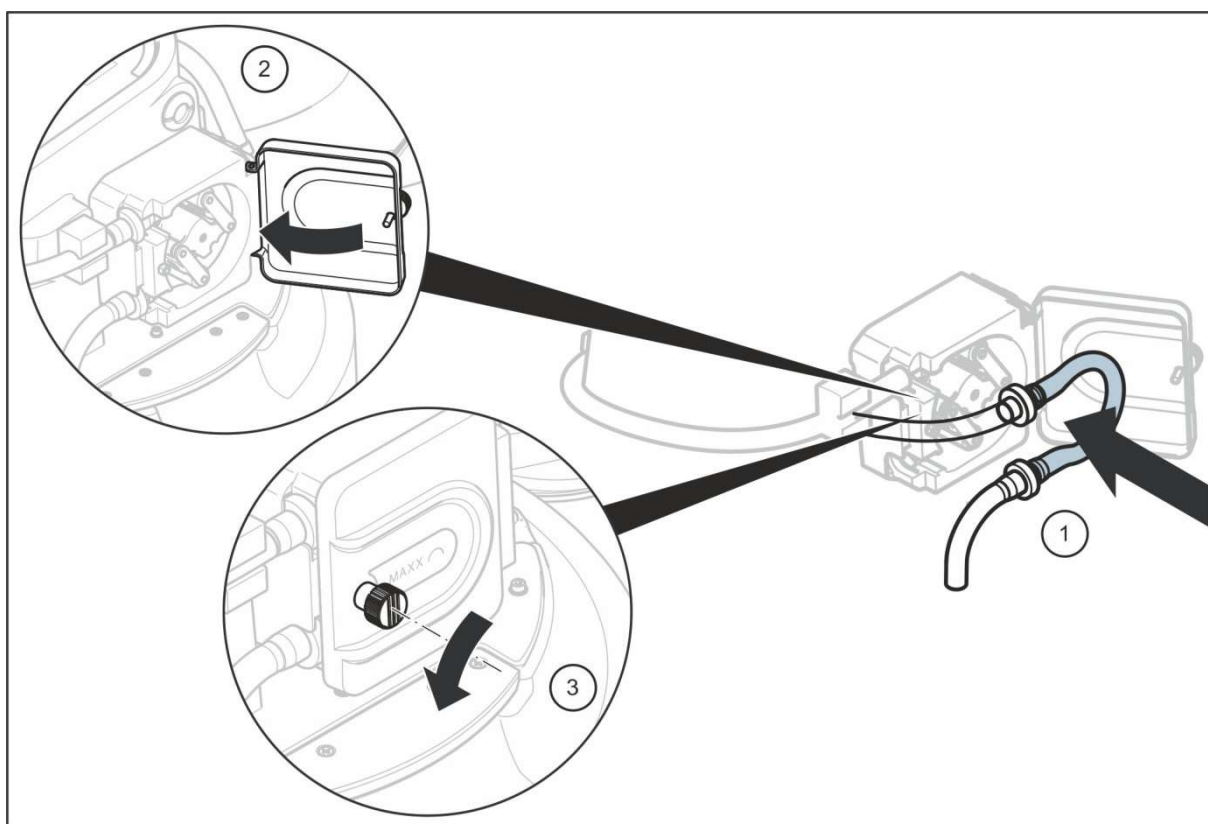
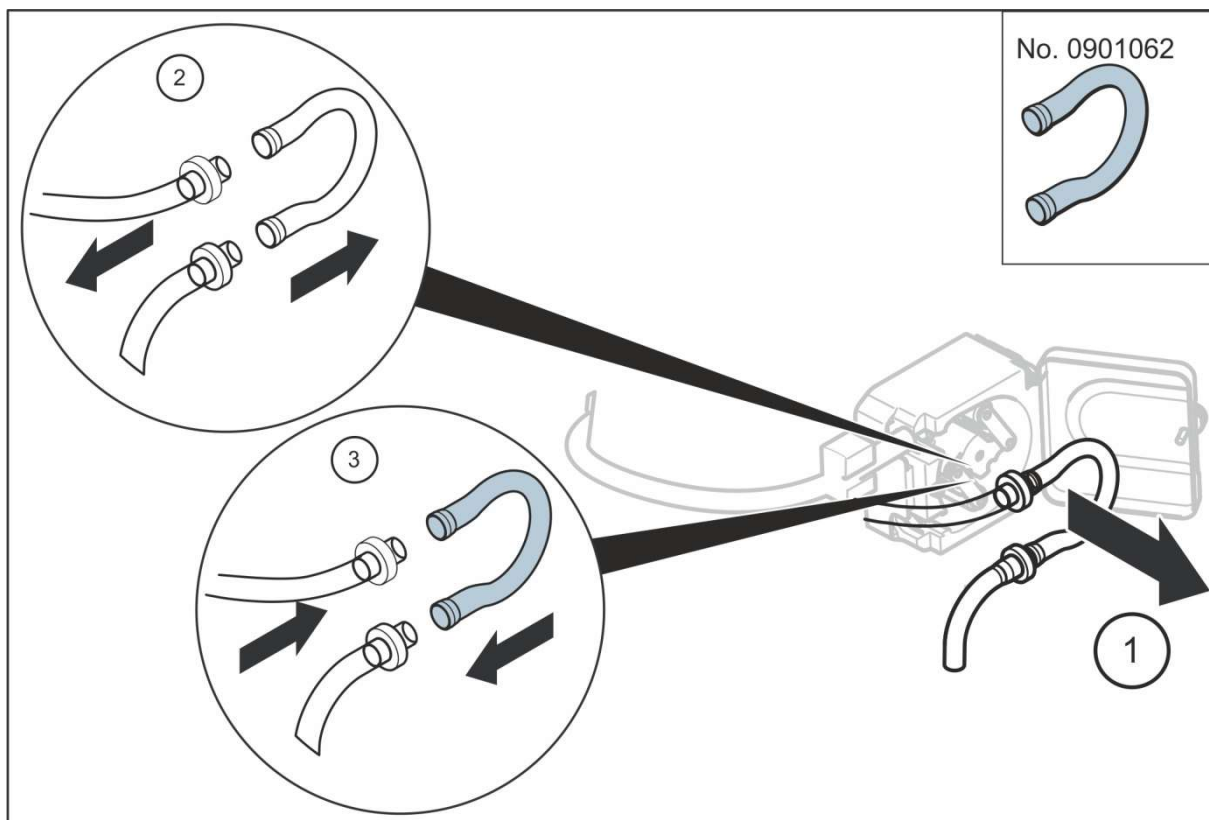
Inspect and clean the pump tubing and rollers on a regular basis. Replace the tubing (Part.No. 0901062) when deteriorated, at regular intervals.

Note: the hose and hose connectors must be dry when changing



Danger

Changing the pump hose may only be carried out with the power supply disconnected.



WARRANTY AND LIABILITY

The manufacturer warrants that the product supplied is free of material and manufacturing defects and undertakes the obligation to repair or replace any defective parts at zero cost.

The warranty period is **12 months** from delivery resp. invoice date. Consumables and damage caused by improper handling, poor installation or incorrect use are excluded from this clause

With the exclusion of the further claims, the supplier is liable for defects including the lack of assured properties as follows: all those parts that, within the warranty period calculated from the day of the transfer of risk, can be demonstrated to have become unusable or that can only be used with significant limitations due to a situation present prior to the transfer of risk, in particular due to incorrect design, poor materials or inadequate finish will be improved or replaced, at the supplier's discretion. The identification of such defects must be notified to the supplier in writing without delay, however at the latest 7 days after the identification of the fault. If the customer fails to notify the supplier, the product is considered approved despite the defect. Further liability for any direct or indirect damages is not accepted.

If instrument-specific maintenance and servicing work defined by the supplier is to be performed within the warranty period by the customer (maintenance) or by the supplier (servicing) and these requirements are not met, claims for damages due to the failure to comply with the requirements are rendered void.

Any further claims, in particular claims for consequential damages cannot be made.

Consumables and damage caused by improper handling, poor installation or incorrect use are excluded from this clause.

▪

MAXX Mess- u. Probenahmetechnik GmbH

Hechinger Str. 41, D-72414 Rangendingen

Tel. +49(0)7471-98481 0 Fax +49(0)7471-98481 44

www.maxx-gmbh.com

info@maxx-gmbh.com