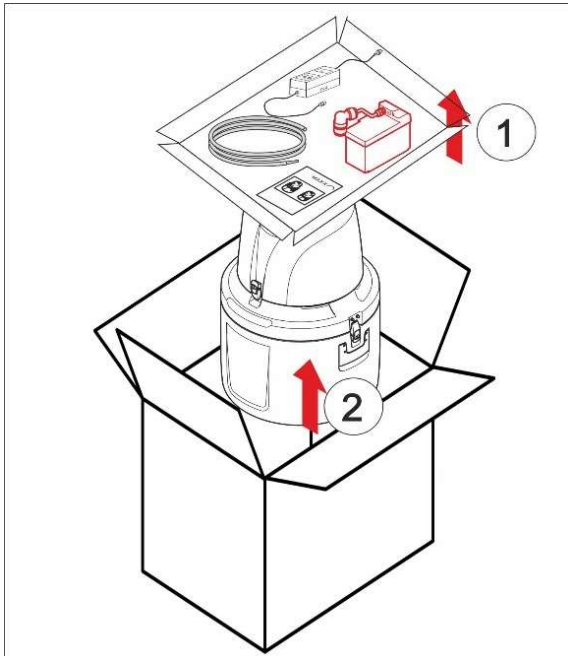
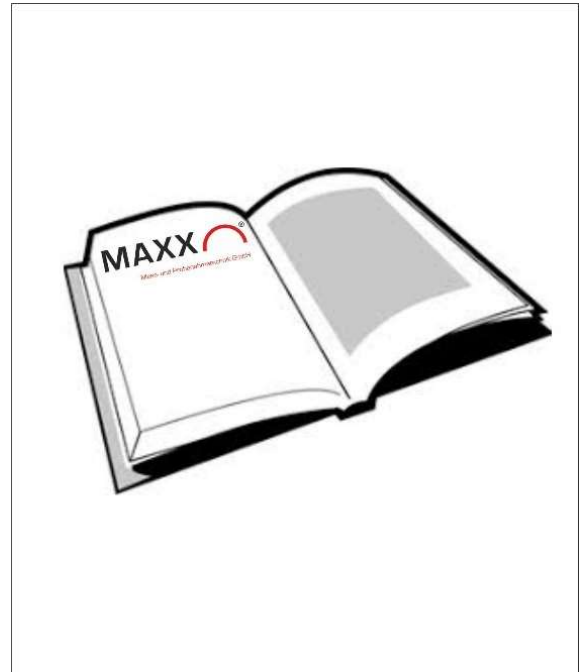


First important steps (P6 Peristaltic Pump):

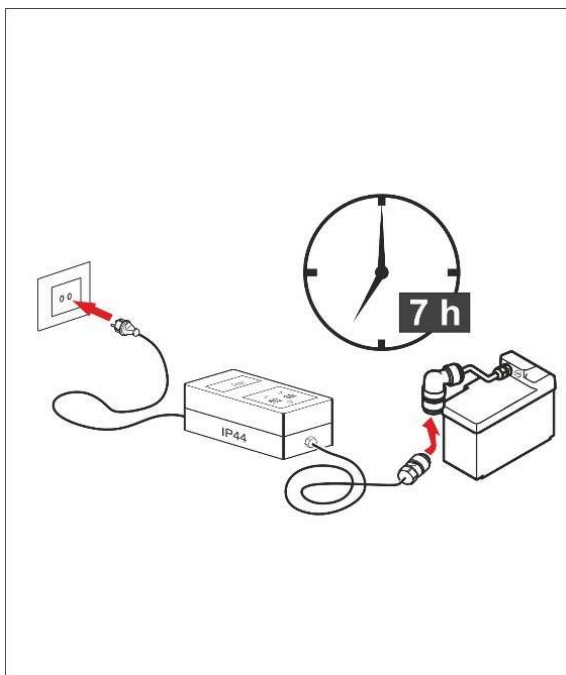
1. Unpack the device



2. Read the manual!



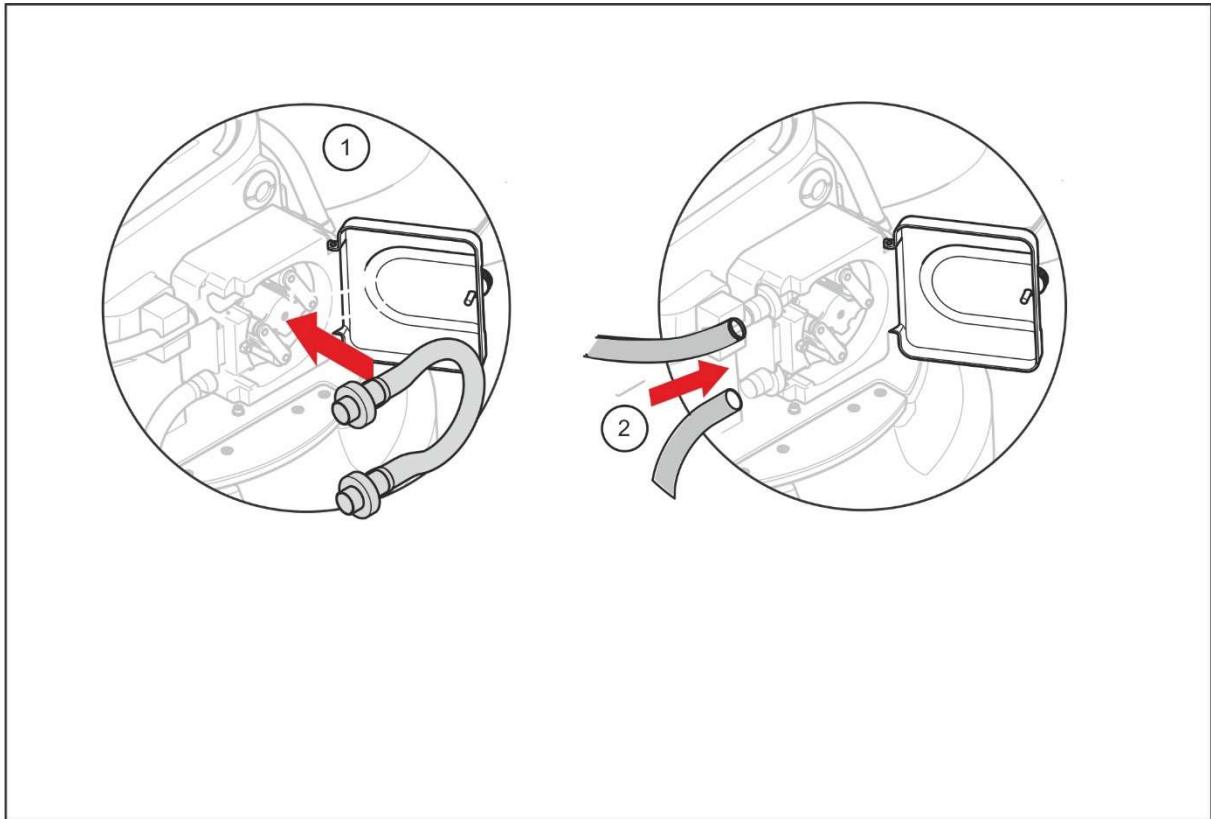
3. Charge the battery



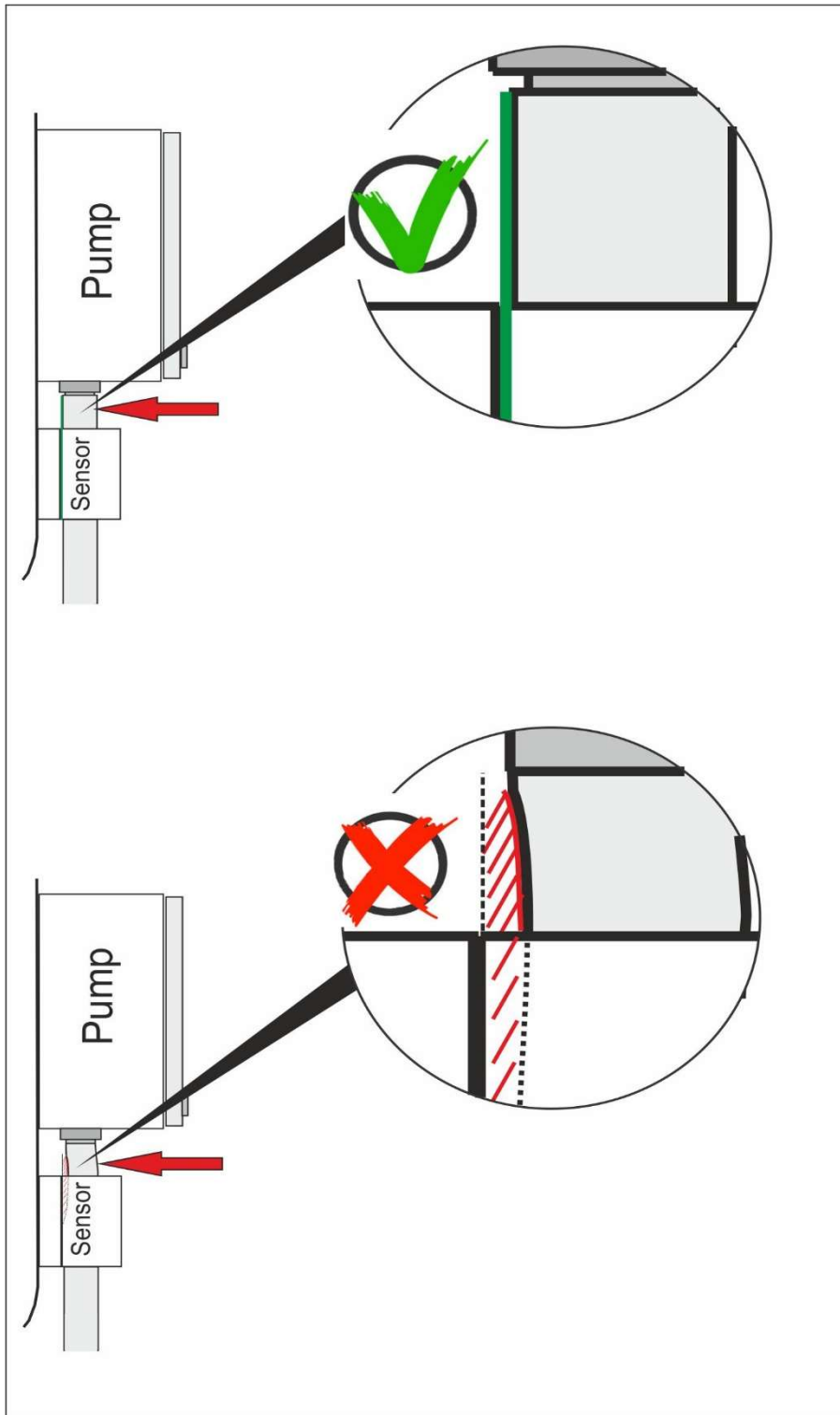
4. Connect the battery at the sampler



5. Put the tube in the pump and connect the tubes

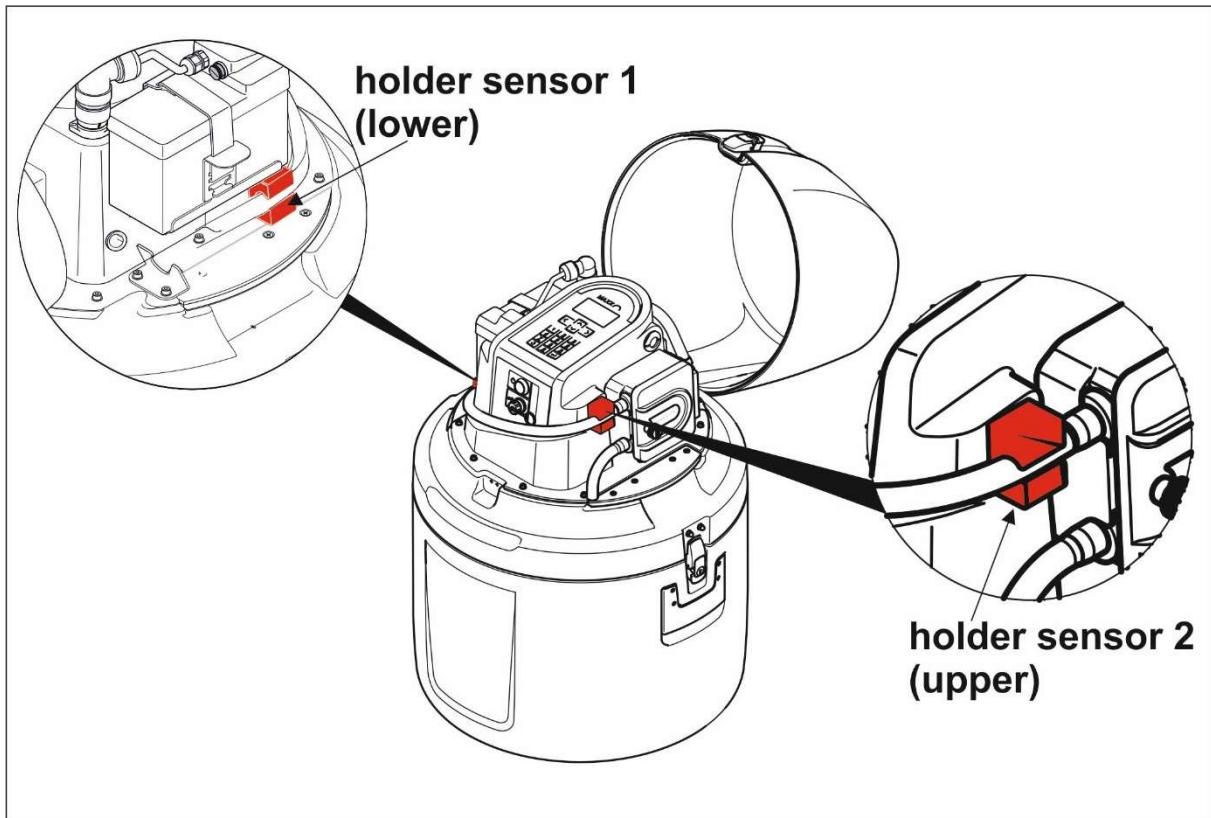


6. Pay attention, that the hose in the upper holder of of sensor (2) fits correctly (press back between sensor and pump)!





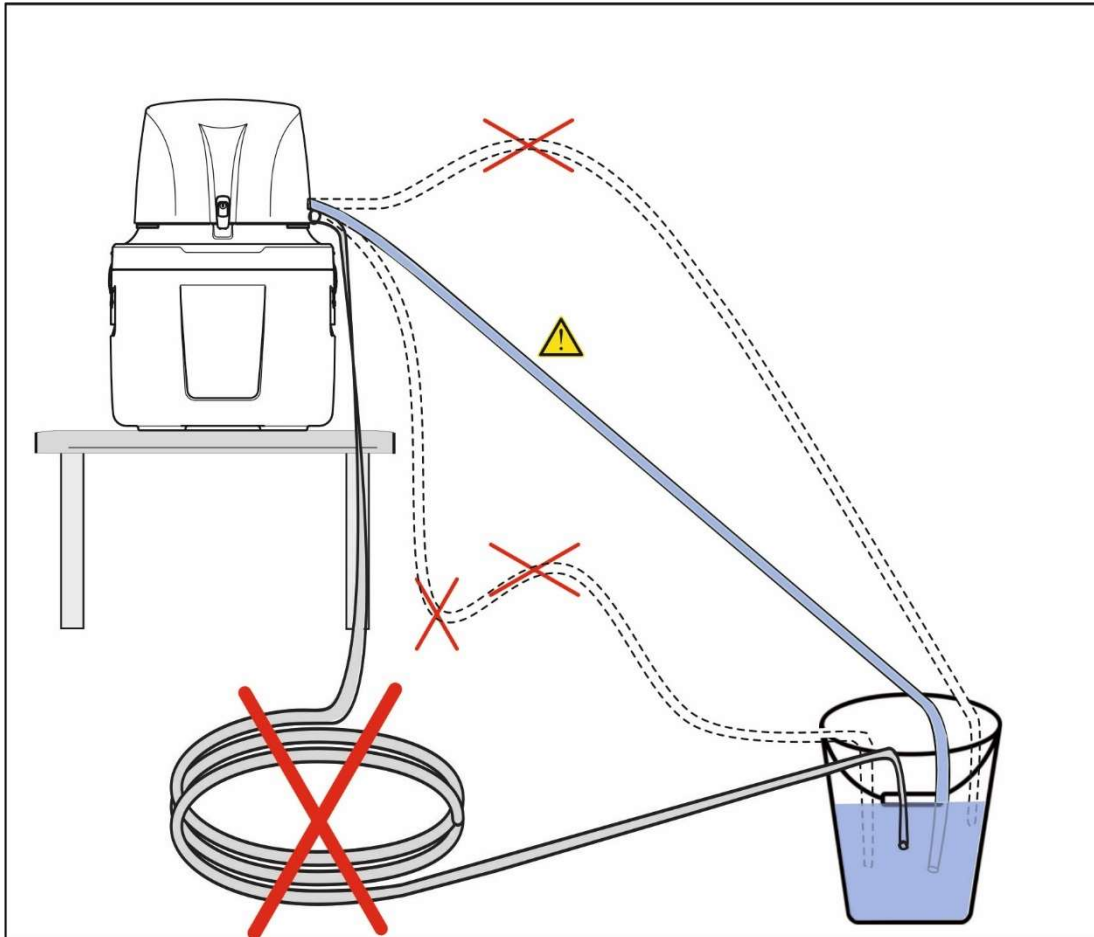
Check if the hose fits also well at the lower holder of of sensor (1). Just press on the tube to be sure!



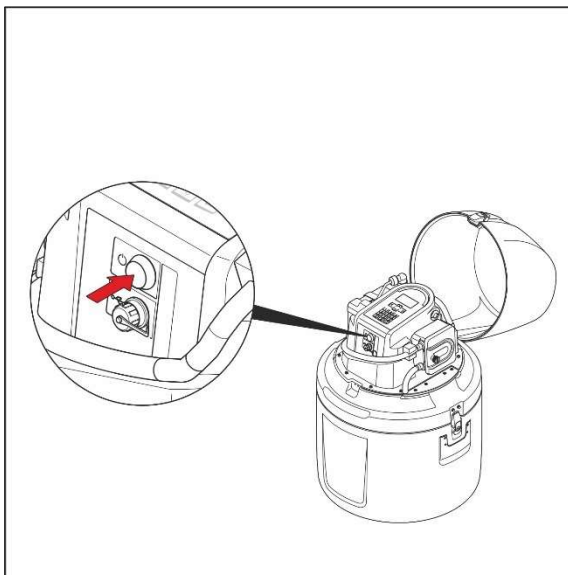
7. suction hose – straight down!



This is one of the most important points!
Please pay attention!

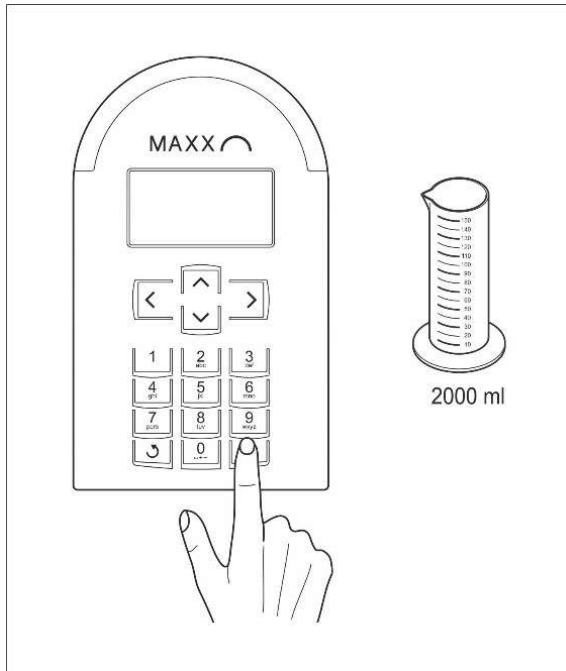


8. Switch on the sampler



9. Calibration of Peristaltic system

SETUP → SYSTEM SETTINGS → CALIBRATION VOL.



READY TO RUN!